

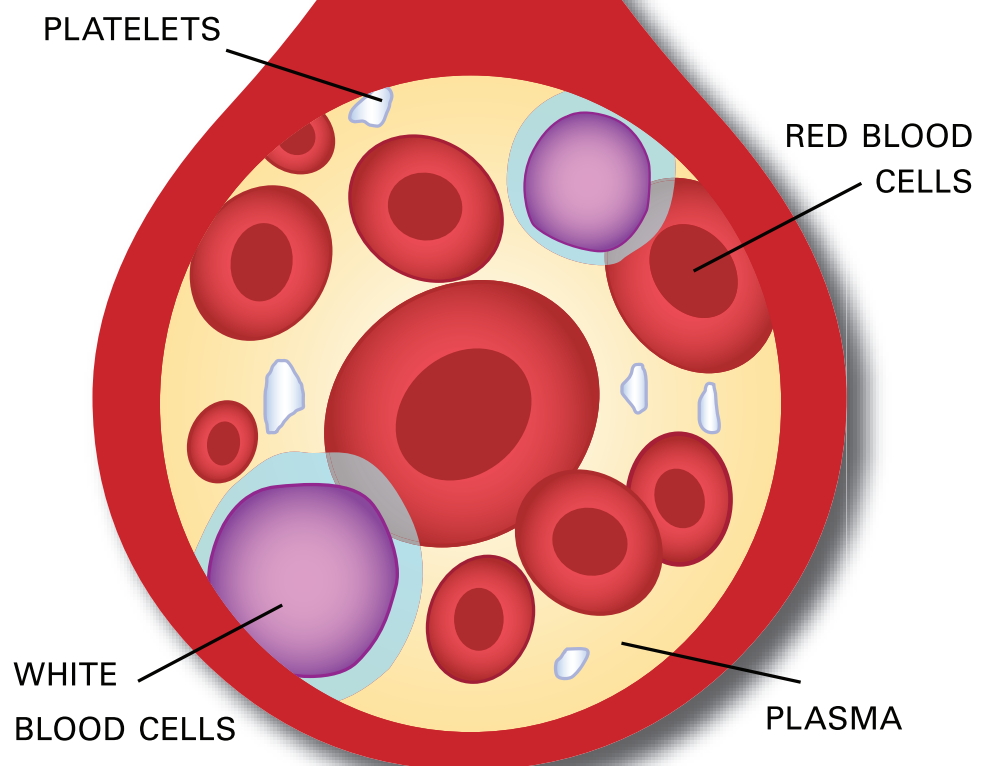
AN *Incredible* MACHINE

WHAT *is* BLOOD?

BLOOD IS COMPOSED *of*
TISSUE CELLS & PLASMA

IT IS

80% WATER,
20% SOLID.



BLOOD CONTAINS
3 TYPES *of* CELLS



PLATELETS
(THROMBOCYTES)
HELP BLOOD CLOT

1

**RED BLOOD
CELLS**

(ERYTHROCYTES)
CARRY OXYGEN
THROUGHOUT THE BODY

2

**WHITE BLOOD
CELLS**

(LEUKOCYTES)
HELP FIGHT INFECTION

3

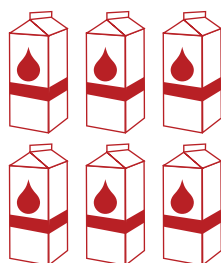
IN **1 DAY**, BLOOD TRAVELS A TOTAL OF



THAT'S
4 TIMES
THE DISTANCE FROM NEW YORK TO LOS ANGELES.

A PERSON HAS ABOUT

6 QUARTS
of blood



that circulate through the body
3 TIMES PER
MINUTE

 **TEXAS HEART[®] INSTITUTE**
at St. Luke's Episcopal Hospital



LEARN MORE ONLINE
TEXASHEART.ORG