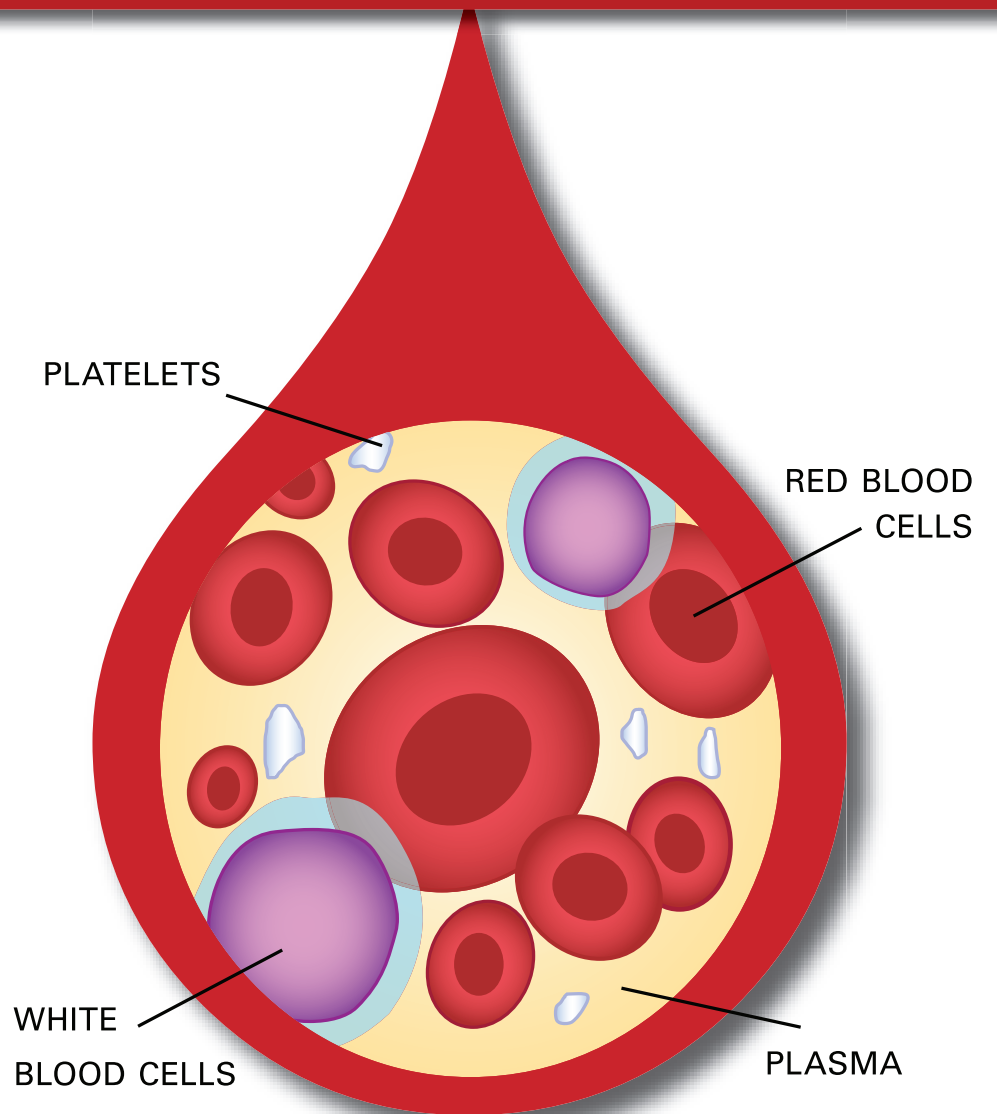


AN *Incredible* MACHINE

WHAT *is* BLOOD?

BLOOD IS COMPOSED *of* TISSUE CELLS & PLASMA

IT IS **80% WATER,**
20% SOLID.



BLOOD CONTAINS
3 TYPES *of* **CELLS**



PLATELETS
(THROMBOCYTES)
HELP BLOOD CLOT

1

RED BLOOD
CELLS

(ERYTHROCYTES)
CARRY OXYGEN
THROUGHOUT THE BODY

2

WHITE BLOOD
CELLS

(LEUKOCYTES)
HELP FIGHT INFECTION

3

IN **1 DAY**, BLOOD TRAVELS A TOTAL OF



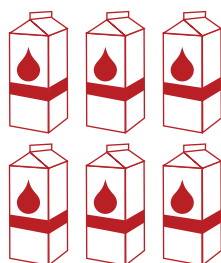
THAT'S

4 TIMES

THE DISTANCE FROM NEW YORK TO LOS ANGELES.

A PERSON HAS ABOUT

6 QUARTS
of blood



that circulate through the body

3 TIMES PER MINUTE

 **TEXAS HEART[®] INSTITUTE**
at St. Luke's Episcopal Hospital



↳ **LEARN MORE ONLINE** ↳
TEXASHEART.ORG