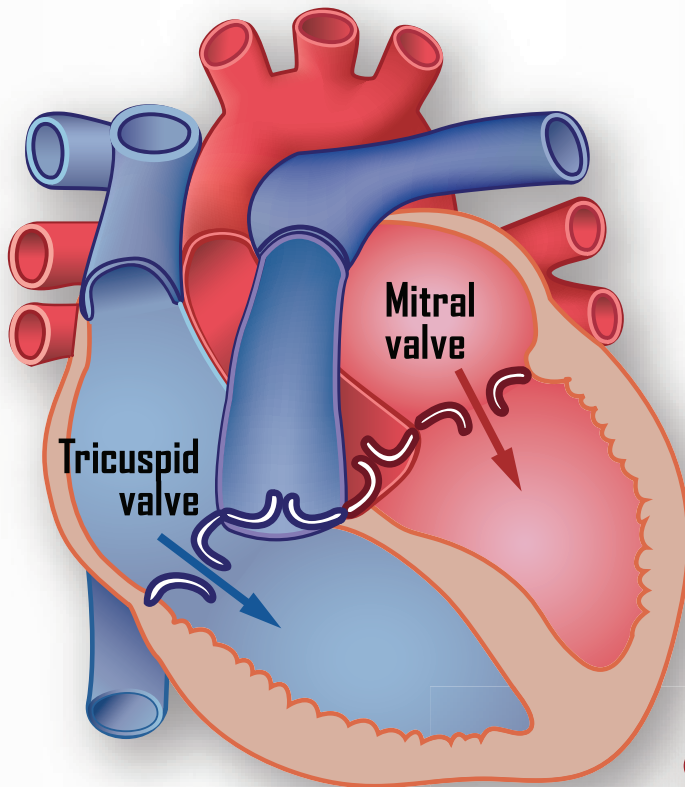


# AN *Incredible* MACHINE

## THE VALVES OF THE HEART

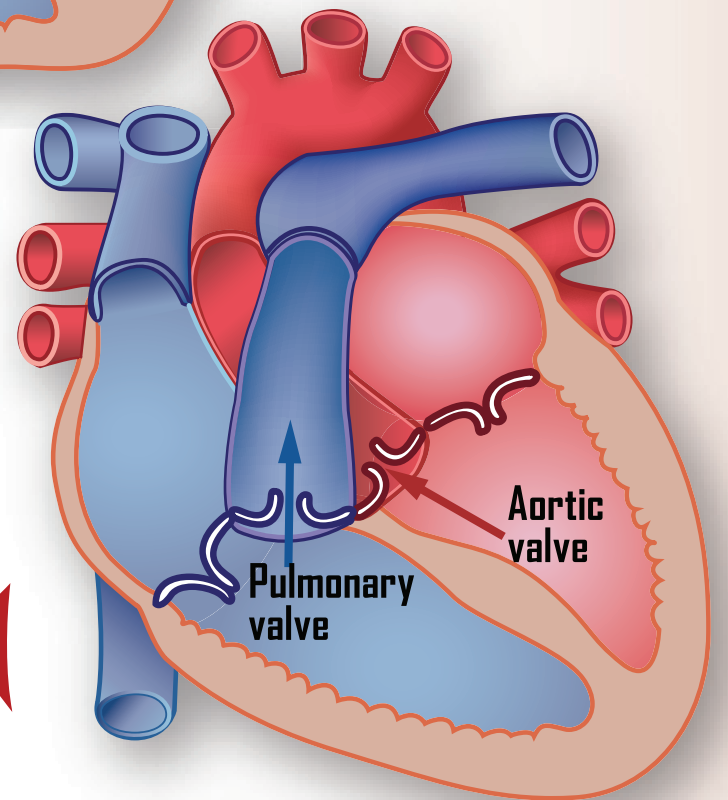


when the heart  
**EXPANDS**  
IT IS CALLED  
**DIASTOLE**

**4 VALVES**  
REGULATE  
*blood flow*  
THROUGH  
YOUR **HEART**



when the heart  
**CONTRACTS**  
IT IS CALLED  
**SYSTOLE**



THE **TRICUSPID VALVE**  
REGULATES BLOOD FLOW BETWEEN THE  
**RIGHT ATRIUM & RIGHT VENTRICLE.**

THE **PULMONARY VALVE**  
CONTROLS BLOOD FLOW FROM THE **RIGHT**  
**VENTRICLE** INTO THE **PULMONARY ARTERIES,**  
WHICH CARRY BLOOD TO YOUR LUNGS TO PICK UP OXYGEN.

THE **MITRAL VALVE** LETS **OXYGEN-RICH**  
BLOOD FROM YOUR LUNGS PASS FROM THE  
**LEFT ATRIUM** INTO THE **LEFT VENTRICLE.**

THE **AORTIC VALVE** LETS **OXYGEN-RICH**  
BLOOD PASS FROM THE **LEFT VENTRICLE** INTO THE  
**AORTA, YOUR LARGEST ARTERY,** WHICH  
THEN DELIVERS BLOOD TO THE REST OF THE BODY.

WHAT CAUSES THE  
**LUB-DUB SOUND**  
*of a heartbeat?*

**LUB** IS THE SOUND MADE WHEN THE  
**TRICUSPID & MITRAL VALVES**  
CLOSE AT THE BEGINNING OF **SYSTOLE.**

**DUB** IS THE SOUND MADE WHEN THE  
**AORTIC & PULMONARY VALVES**  
CLOSE AT THE BEGINNING OF **DIASTOLE.**

 **TEXAS HEART<sup>®</sup> INSTITUTE**  
at St. Luke's Episcopal Hospital

 **LEARN MORE ONLINE**  
**TEXASHEART.ORG**